

*Complete System Shown

Fast, Clean, Permanent Marks

The Archer delivers precision, non-impact marks on a variety of materials including metals and plastics. With the ability to mark linear and elliptical text, barcodes, 2D data matrices, QR codes, serial numbers, logos, and even photo-quality graphics, the Archer has the versatility to meet almost any marking application.

Compact, Space Saving Design

The Archer precision laser marker is an ultra-compact, turnkey system that can fit into tight workspaces, or can easily be moved to different production areas. The system requires only a standard 110V/220V outlet to operate and eliminates the use of bulky external chillers and power supplies that take up extra space.

Simple Operation and Maintenance

The Archer is designed to be user friendly. Through the fully computerized interface, operators can easily program complex marking instructions and accurately control the placement of their marks. Also, the Archer eliminates the cost and hassle of consumables such as replacement pins, messy inks, toxic chemicals and delicate stencils.



YVO₄ TECHNOLOGY

All RMI laser markers utilize Nd:YVO₄ (Vanadate) technology. Nd:YVO₄ lasers feature several inherent advantages over other types of laser systems. When compared to traditional CO₂ and Nd:YAG lasers, Nd:YVO₄ lasers are more energy efficient. This means that RMI's laser marker can achieve a more precise mark while consuming less power. Lower power consumption eliminates the need for external power supplies and large cooling systems, making the RMI laser marker far smaller than comparable systems. Also, Nd:YVO₄ lasers can achieve a smaller spot size and higher energy density than competing systems, making it ideal for marking on highly reflective surfaces like gold, silver, aluminum and other metals.

SIZING UP THE COMPETITION

	Nd:YVO ₄ (RMI)	CO ₂	Nd:YAG (Flash-lamp)	Nd:YAG (Diode-pumped)
Wavelength	1064nm	10.6µm	1064nm	1064nm
Power (W)	5 or 15	30 - 100	50 ~ 100+	3 ~ 20+
Spot Size (micron)	20-40	800	50-100	50-100
Marking Resolution	High	Low	Medium	Medium
Energy Efficiency	High	Medium	Low	Medium
Cooling Efficiency	High	Medium	Low	High
Peak Power	High	Low	High	High
Operating Cost	Low	Medium	High	Low
Maintenance Intervals (Hrs.)	10,000+	Up to 5,000	300 ~ 1,000	10,000+

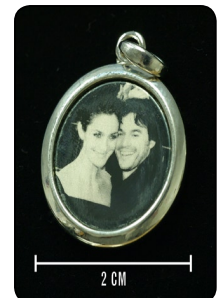
THE ARCHER, WITH 5 OR 15 WATTS OF YVO₄ POWER, IS THE VERSATILE SOLUTION FOR YOUR PART MARKING AND IDENTIFICATION APPLICATIONS.

Markable Substrates:

- > All metals
- > Plastics
- > Ceramics
- > Composites
- > Jewelry

Mark Types:

- > Alphanumerics
- > True Type fonts
- > 2D data matrix codes
- > Barcodes
- > Graphics / Logos
- > Photo-quality images



MARKED SAMPLES



Engraved A2 Hardened Steel Gear



Engraved Steel



Color-changed plastic



Color-changed plastic



Annealed Steel



Engraved Gold



Engraved Titanium



Color-changed plastic



Engraved Steel Tool

ARCHER Specifications

LASER

Wavelength: 1064nm
 Pulse Peak Power: 40 kW (5W) / 120kW (15W)
 Crystal: Yttrium Vanadate (YVO₄)
 Pulse Width: Less than 10ns

Beam Quality: Mode TEM₀₀ Quality M² < 1.2

Q-Switch Frequency: 0-100kHz
 Spot Size: 20-40 micron
 Aiming Diode: 632nm (red)

SYSTEM

Power: AC 100-240V, 10A 50/60Hz
 Cooling: Thermoelectric (TE)
 (no fluids or external chiller)

Installation: Horizontal / Vertical
 Operating Environment: 46-95°F (10-35°C)

Marker Head (20lbs / 9kg): > 416mm(L) x 158mm(W) x 277mm(H)
 > 16.4" (L) x 6.2" (W) x 10.8" (H)

Laser Controller(29lbs / 13kg): > 463mm(L) x 432mm(W) x 191mm(H)
 > 18.2" (L) x 17.0" (W) x 7.5" (H)

Class 1 Operation Available | CDRH Compliant

INTEGRATION

Communications: > Serial (RS232) / WinSockets / Digital I/O

Marker:

Inputs	Outputs
> Start Mark	> Ready
> Stop Mark	> Busy
> Skip Mark	
> Mark Element	

Controller (3 Outputs): > Laser On
 > External Light
 > Error

Software Development Kit Available

MARKING

Mark types: > Raster
 > Linear / Elliptical text
 > Serial Numbers
 > Barcodes
 > 2D data matrix
 > Logos
 > Photo-quality graphics

Marking Area:
 100mm f-Theta Lens 2.4" x 2.4" (60mm x 60mm)
 160mm f-Theta Lens 4" x 4" (100mm x 100mm)
 254mm f-Theta Lens 6" x 6" (150mm x 150mm)



RMI Laser Division
 106 Laser Drive
 Lafayette, CO 80026
 Tel: 303.664.9000
 Email: laser@rmico.com